



| | Fresh Water | Pool Water | Sea Water | 220-240 V | 400 V | 110-120 V | 50 Hz | 60 Hz | 12 V AC | 24 V DC | DMX | DMX/RDM | Plug and Spray |
|---------------------|-------------|------------|-----------|-----------|-------|-----------|-------|-------|---------|---------|-----|---------|----------------|
| Water Screen Nozzle | | | | | | | | | | | | | |

*Seawater product version on request

WATER SCREEN NOZZLE

The Water Screen Nozzle generates a projection screen made of water to display. It can be used a variety of media including Video and Lasers for special events.

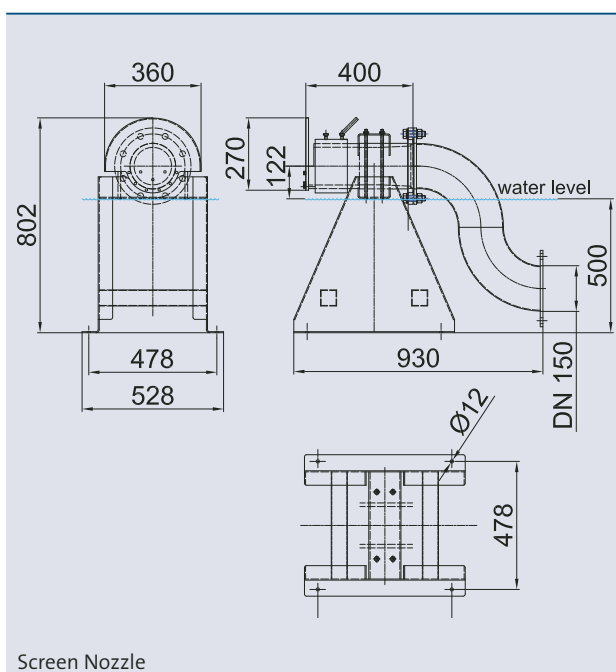
The screen is a complete semi-circle with 180° in different heights as a function of flow rate and pressure delivered by the pump system.

Product characteristics at a glance

- Optimized nozzles for a 180° water screen
- Ideal for rear projection of videos and or lasers
- An extra flow regulation pipe is not necessary
- The gap of the nozzle defining the water film thickness can install individually



Screen Nozzle



Screen Nozzle

The nozzle creates a filmy water screen. This qualifies for projection of Laser, Video, Slide and Gobo (Graphical optical blackout) type of illumination. Based on the law of physics of light, the position of the nozzle should always be between the viewer and projector.

Pump on request. Small Screen Nozzle 15 x 5 version on request.

| | | Screen nozzle 30 x 10 | Screen nozzle 45 x 15 |
|------------------------|---------|-----------------------|-----------------------|
| Water Screen Dimension | [m] | 30 x 10 | 45 x 15 |
| Dimensions (L x W x H) | [mm] | 930 x 528 x 802 | 930 x 528 x 802 |
| DWB | [l/min] | 2500 | 4000 |
| DDB | [bar] | 7 | 12 |
| Material | | Stainless steel | |
| Weight with bracket | [ap.kg] | 95 | 95 |
| Order no. | | 58970 | 58970 |