



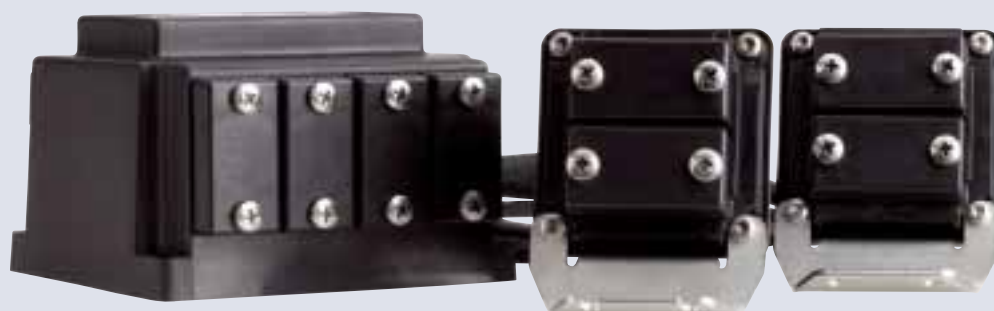
	Fresh Water	Pool Water	Sea Water	220-240 V	400 V	110-120 V	50 Hz	60 Hz	12 V AC	24 V DC	DMX	DMX/RDM	Plug and Spray
Underwater Switch 24V													

UNDERWATER SWITCH 24V / DMX / 02

The Underwater Switch 24V / DMX / 02 is a 24 V DC underwater switch to control all monochrome 24 V DC LED lights, 24 V DC halogen lights and AirNozzles for max. 4 components. The DMX-RDM capable Underwater Switch 24 V DC / DMX / 02 enables a reduction of the system costs by up to 50 %. Due to the 24 voltage IP 68 plug connection the device can be installed quickly and easily.

Product characteristics at a glance

- 24 V DC Underwater Switch for:
 - Air Nozzle 24 V DC
 - All monochrome 24 V DC LED lights
 - 24 V DC halogen lights
- Input: 1 x 24 V DC; 1 x DMX-RDM
- Output: 4 x 24 V DC switchable
- All 4 slots are freely programmable (on/off)
- Protection class: IP 68
- Suitable for operation in sea water

NEW


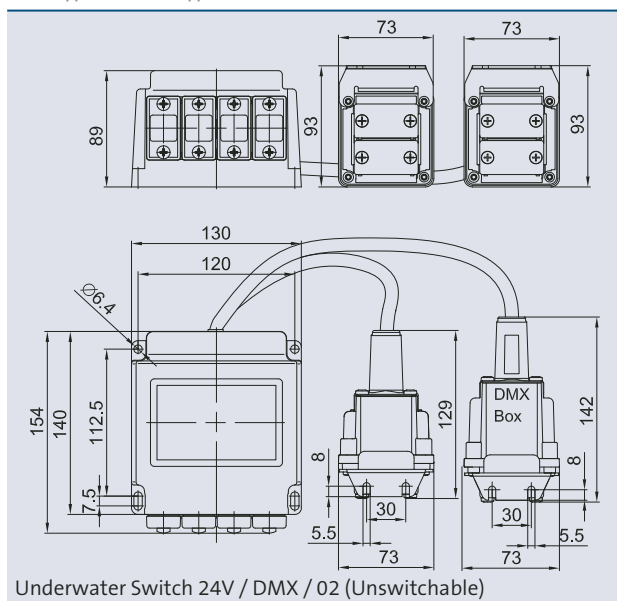
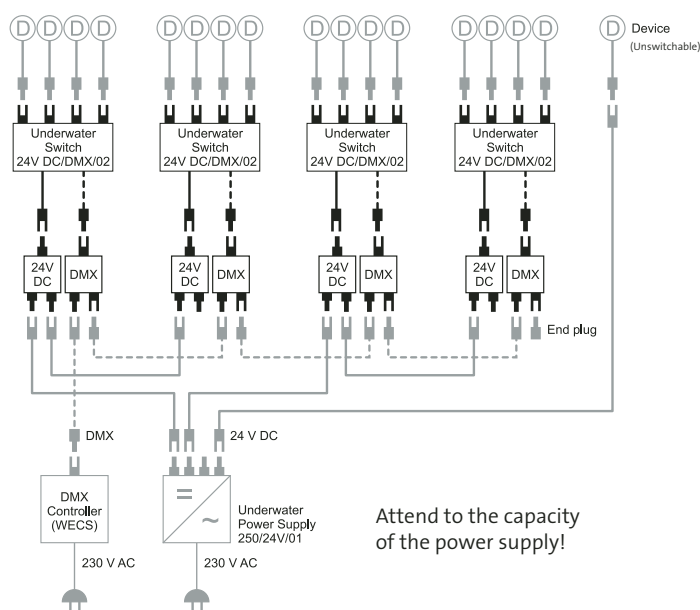
Underwater Switch 24V / DMX / 02





POWER

UNDERWATER SWITCH



Underwater Switch 24V / DMX / 02

Dimensions (L x W x H)	[mm]	154 x 130 x 89
Nominal input voltage	[V/DC]	24
Max. input current (depends on the connected sec. device type)	[A]	10.5
Secondary voltage	[V/DC]	4 x 24
Max. secondary current	[A]	4 x up to 2.5 A / slot switchable
Protection class		IP 68
DMX Connection		1.0 m with Box
Power Connection		1.0 m with Box
Weight	[kg]	2.9
Order no.		56411