



	Fresh Water	Pool Water	Sea Water	220-240 V	400 V	110-120 V	50 Hz	60 Hz	12 V AC	24 V DC	DMX	DMX/RDM	Plug and Spray
LunAqua 5.1	✓	✓	✓	✓	✓	✓	✓	✓	✓	✓	✓	✓	✓
UWS TN 508	✓	✓	✓	✓	✓	✓	✓	✓	✓	✓	✓	✓	✓

LUNAQUA 5.1 / UWS TN 508

The LunAqua 5.1 creates dazzling beauty, particularly underwater. This powerful spotlight brings even more light into the darkness and can also be installed in larger fountain systems.

LunAqua 5.1 has been especially designed for underwater operation and can be operated with PAR 38 100 W reflector bulbs in 12 Volts. This powerhouse convinces by a perfect price/ performance ratio, easy and safe installation, and versatile implementation as a single spotlight or in parallel group cabling. Input and output are fitted with high-quality PG cable glands for H05 or H07 cable.

Product characteristics at a glance

- Maximum power above the water surface or underwater
- Housing made of impact-resistant plastic
- Extremely corrosion resistant
- For PAR 38 reflector bulbs up to 100 W
- Including stainless steel mounting bracket



LunAqua 5.1

Individual fountains, water effects, or plants are easily illuminated with the small but robust UWS TN 508 spotlights.

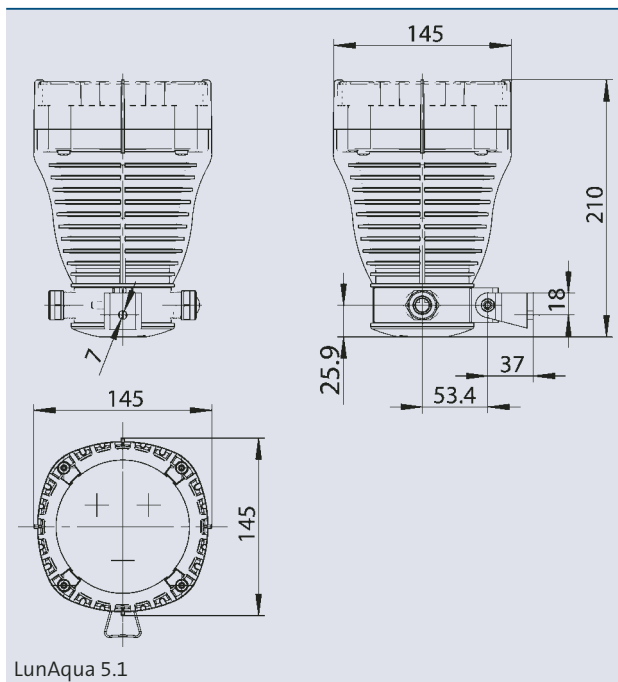
The compact design with a robust and corrosion-resistant Tombac construction: The UWS TN 508 spotlight is ideal for use in public displays. And the PG 11 cable glands enable individual spotlights to be connected in a chain.

Product characteristics at a glance

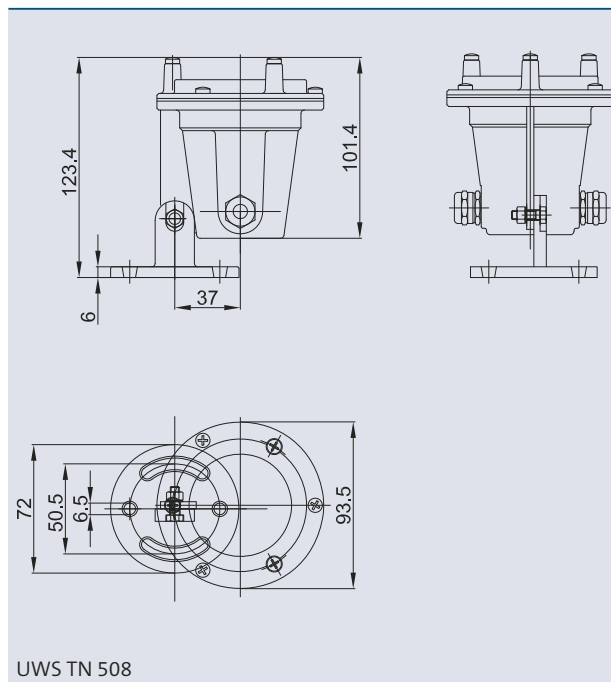
- Accentuates with rich light effects
- Can be implemented underwater and above the water surface
- Power consumption: 50 Watts
- Can be switched in series for a lighting chain



UWS TN 508



LunAqua 5.1

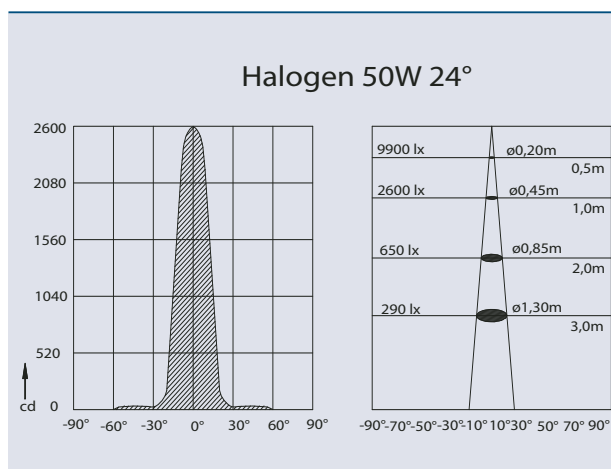


UWS TN 508

Connection cable 12V AC/01 (see page 160)	Order no.
Cable 12V AC /3.0 m/01	12374
Cable 12V AC /7.5 m/01	12375
Cable 12V AC /15.0 m/01	11740
Power Box	Order no.
Power Box 12V AC/01 (see page 160)	50492
Underwater transformer UST 150/01 (see page 190)	50401

LunAqua 5.1 Delivered with bulb		
Dimensions (ø x H)	[inch]	5.50 x 8.40
Cable inlets		2x PG 16
Power consumption	[W]	80
Nominal voltage	[V/Hz]	120/60
Protection class		IP 68
Mounting		E 26
Cable length	[ft]	2.50
Weight	[lbs]	5.60
Order no.		57104

LunAqua 5.1 Delivered without bulb, transformer and cable		
Dimensions (ø x H)	[mm]	145 x 210
Cable inlets		2x PG 16
Cable diameter		H05 and H07
Power consumption	[W]	max. 100
Nominal voltage	[V/Hz]	12/50-60
Protection class		IP 68
Mounting		E 27
Cable length		-
Weight	[kg]	1.2
Order no.		57427



Accessories for TN 508 (must be ordered separately)

Replacement Halogen reflector bulb		
Power consumption	[W]	50 W
Beam angle	[°]	30
Order no.		51394

UWS TN 508 Delivered without transformer and cable, with bulb		
Dimensions (ø x H)	[mm]	94 x 125
Nominal voltage	[V]	12
Power consumption	[W]	50
Light intensity	[cd]	2600
Beam angle		24°
Protection class		IP 68
Cable inlets		2x PG 11
Material		Tombac
Weight	[kg]	1.10
Order no.		51446