



	Fresh Water	Pool Water	Sea Water	220-240 V	400 V	110-120 V	50 Hz	60 Hz	12 V AC	24 V DC	DMX	DMX/RDM	Plug and Spray
UWS T 111	✓	✓	✓	✓	✓	✓	✓	✓	✓	✓	✓	✓	✓
UWS TS 111	✓	✓	✓	✓	✓	✓	✓	✓	✓	✓	✓	✓	✓

## UWS T 111 AND UWS TS 111

These underwater spotlights have been designed with extra strength for professional use in public installations. In underwater operation they effectively set the stage for fountains and water features, out of the water they illuminate sculptures, buildings, or trees.

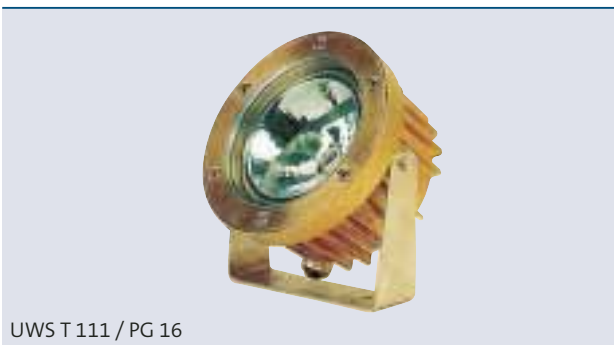
They have been designed with appropriate stability and strength for their area of implementation. The spotlight housing is made of cast tombac and has a PG 16 cable gland for UWS T 111 and UWS TS 111.

Halogen reflector bulbs are protected by a 15 mm thick, shatterproof safety glass lens, which is screw-fastened to the housing. The smooth surface ensures long cleaning intervals.

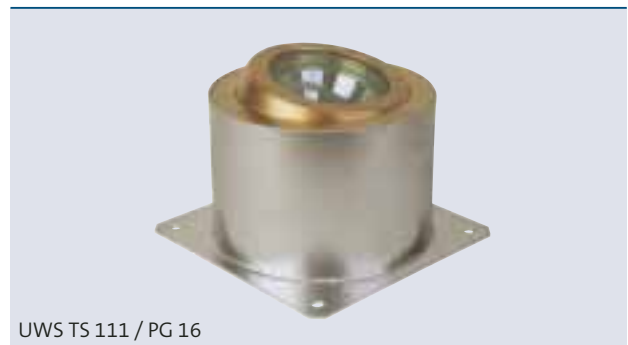
The UWS TS 111 spotlight can be turned in all directions by 12.5° in its stainless steel installation housing. Two clamp rings enable precise alignment on site.

### Product characteristics at a glance

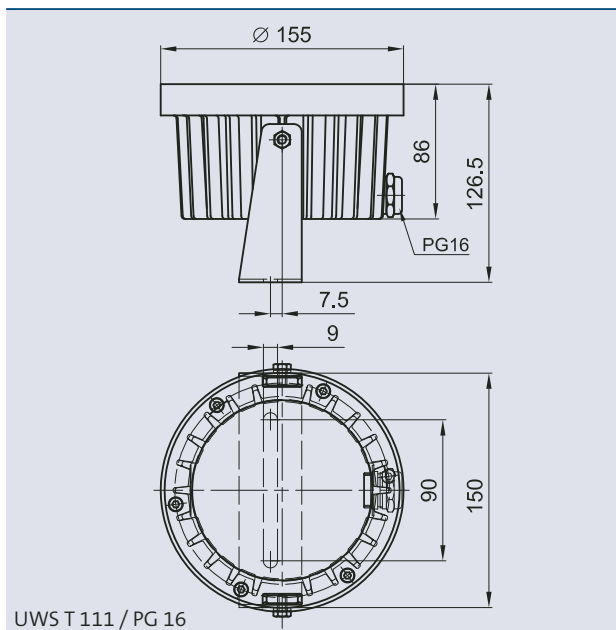
- Extremely robust tombac and stainless steel design
- Safety glass cover
- Flat surface for easy cleaning
- Extremely corrosion resistant
- Can also be used out of the water
- Supplied exclusive of connection cable, transformer, and bulb



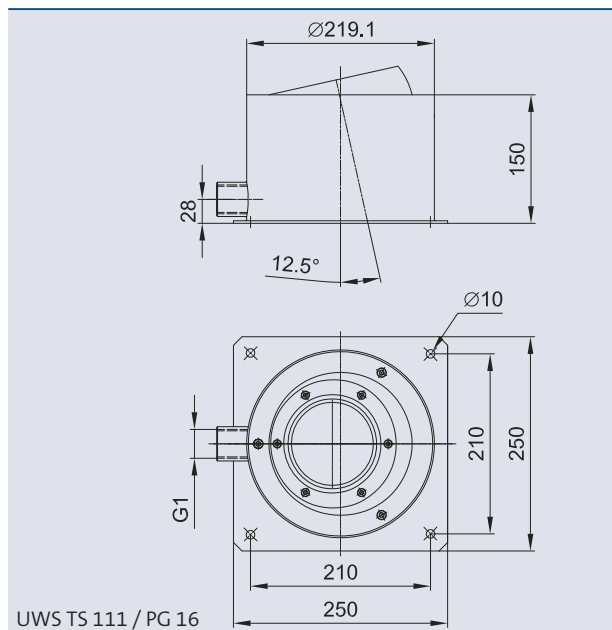
UWS T 111 / PG 16



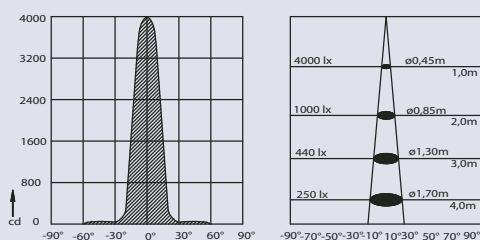
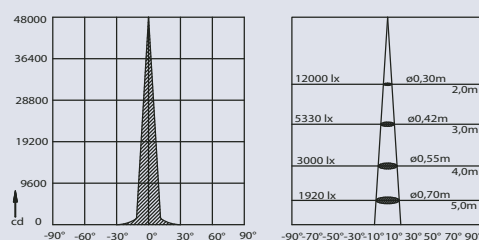
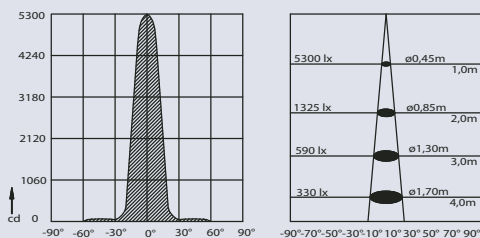
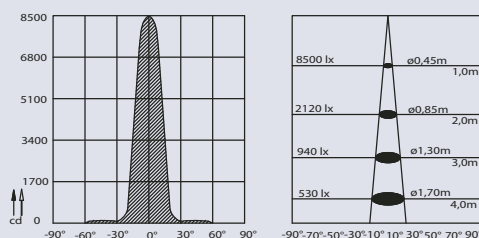
UWS TS 111 / PG 16



UWST 111 / PG 16



UWS TS 111 / PG 16

**Halogen 50W 24°**

**Halogen 100W 10°**

**Halogen 75W 24°**

**Halogen 100W 24°**

**Accessories for UWS T 111/TS 111 (must be ordered separately)**

Halogen reflector bulb 12 V				
Colour	white	white	white	white
Power Output [W]	50	75	100	100
Beam angle	24°	24°	10°	24°
Order no.	52939	52941	52942	52943

Underwater transformer UST 150/01 (see page 152)	50401
Underwater transformer UST 150/A/01 (see page 152)	50517

Connecting cable 12V AC/01 (see page 142)	Order no.
Cable 12V AC /3.0 m/01	12374
Cable 12V AC /7.5 m/01	12375
Cable 12V AC /15.0 m/01	11740
Power Box	Order no.
Power Box 12V AC/01 (see page 143)	50492

Underwater spotlight Delivered without bulb, transformer and cable		UWST 111	UWS TS 111
Dimensions (Ø x H)	[mm]	155 x 127	219 x 155
Nominal voltage	[V]	12	12
Power consumption	[W]	50, 75 or 100	50, 75 or 100
Light intensity	[cd]	4500 – 50000	4500 – 50000
Beam angle	[°]	10 or 24	10 or 24
Protection class		IP 68	IP 68
Cable inlets		1 x PG 16	1 x PG 16
Material		Tombac / stainless steel brass / 1.4301 (AISI 304)	Tombac / stainless steel brass / 1.4571 (AISI 316Ti)
Cable length		–	–
Weight	[kg]	4.0	11.0
Order no.		52904	52909